

Designing and Building Sustainable Homes That Make Life Easier: A Look Inside the Universal Design Living Laboratory



Webinar – User Guide

This meeting will be recorded

Everyone is muted to ensure sound quality

Click the 3rd tab to see the course presentation

Put questions in chat box as you have them (don't wait!)

If you have sound issues try logging out and back in

Please wait till the very end to get CEU Instructions!



Free Fall CE Webinars Continue

Energy Efficiency Success in Low Income Housing
10/21

VOC eating drywall & healthy indoor air – 11/4

Simple Strategies to reduce Electromagnetic Frequency in
residential building 11/18

Chemical Sensitivity and the new construction process 12/9

[greenhomeinstitute.org / events](http://greenhomeinstitute.org/events)



Designing and Building Sustainable Homes That Make Life Easier: A Look Inside the Universal Design Living Laboratory



1 Hour – Continuing Education Units



Host

Brett Little
LFA, LEED APH, GHP
Executive Director
GreenHome Institute
Grand Rapids, MI
info@greenhomeinstitute.org
888 LEED APH ext 1



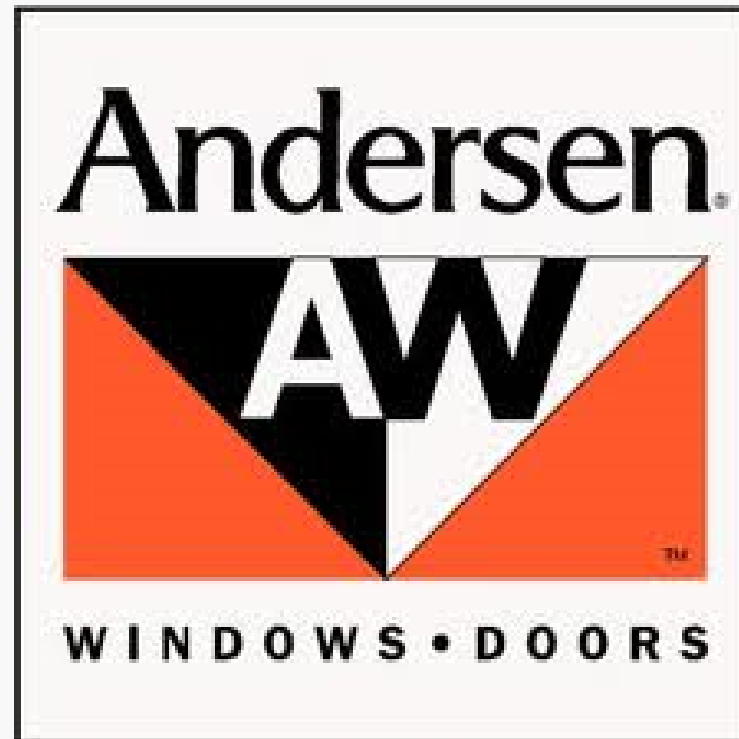
- Celebrating 15 Years!
- LEED for Homes Provider
- 501(c)3 non-profit; mission:



We exist to empower people to make healthier and more sustainable choices in the renovation and construction of the places we live.

GreenHomeInstitute.org

Platinum + Sponsor



2015 Sponsors



CAKESYSTEMS™

CertainTeed
SAINT-GOBAIN

AirRenew™



WhisperGreen®
VENTILATION FAN



warmboard®

Do you support greener homes?

Benefits include

Supporting free CE education

Full In person / Web on demand or live event discounts

LEED & Green Home Certification cost discounts

Member list & sticker

Eligible for project of the year



This entire presentation is the property
of Rosemarie Rossetti, Ph.D.

Copyright 2015



**Designing and Building Sustainable Homes That
Make Life Easier:
A Look Inside the
Universal Design Living Laboratory**



Rosemarie Rossetti, Ph.D.

*“My life
changed in
an instant.”*

*unpredicted,
unprecedented,
irreversible
change*



Woman hit by tree limb remains hospitalized

GRANVILLE — A 44-year-old woman remains hospitalized in Columbus after being injured by a falling tree limb Saturday. Rose Marie Rossetti, 44, of Gahanna, is listed in serious condition at Grant Medical Center.

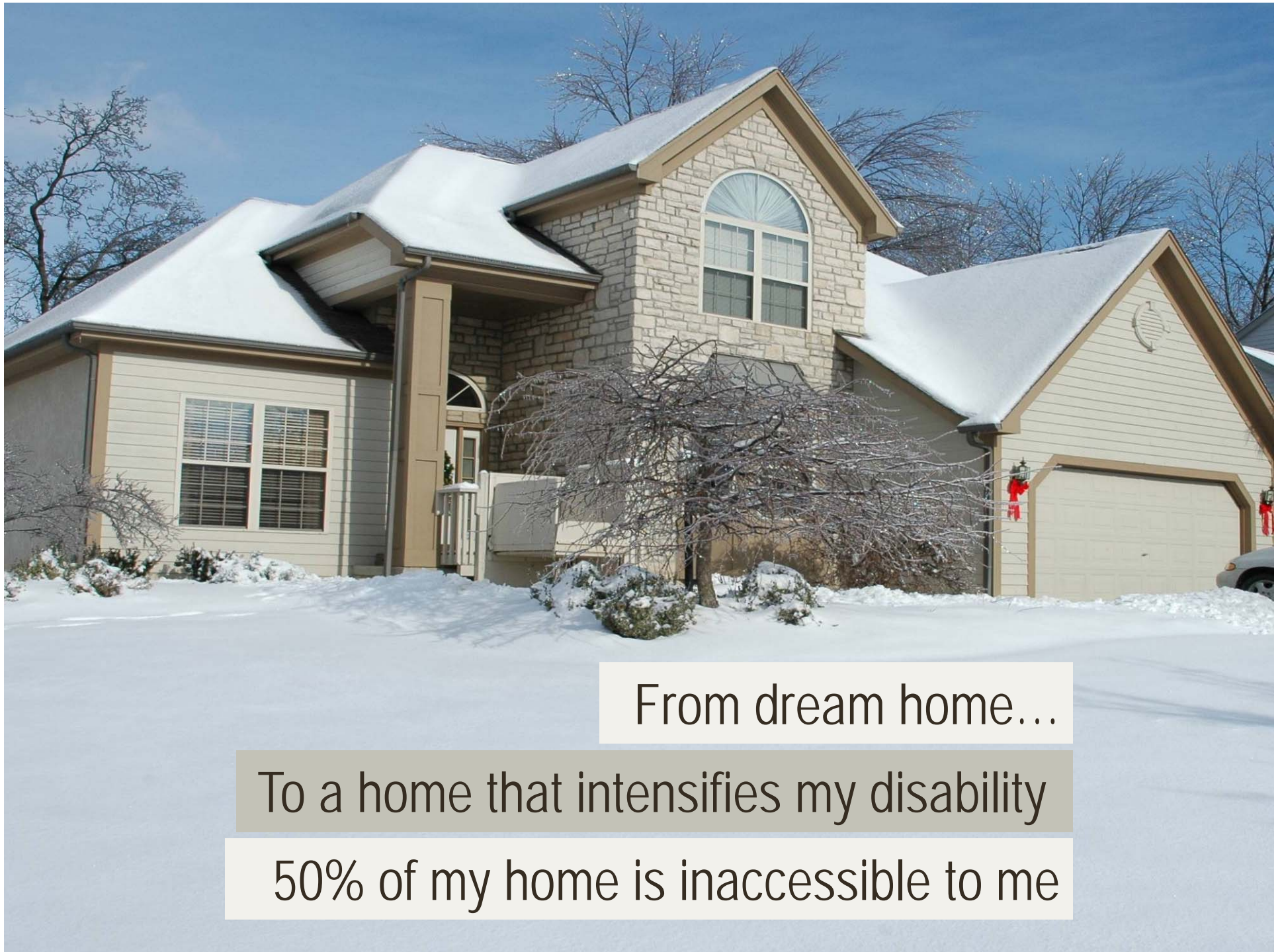
Rossetti had been flown to the Columbus facility by MedFlight after the 5:45 p.m. accident. Rossetti and her husband were riding their bicycle the path about a mile from Granville when a tree limb fell down and she was

its limbs, according to Granville Fire Chief Bob Schafer.

She was struck in the head and pinned under the limb. Her husband wasn't injured.







From dream home...

To a home that intensifies my disability

50% of my home is inaccessible to me







Universal Design Living Laboratory
The National Demonstration Home & Garden
www.UDLL.com

Green Building Certification Programs



**National Association
of Home Builders**



Home Innovation
NGBS GREEN CERTIFIED™
— **GOLD** —



Universal Design Certification Programs





Front Entry



Welcoming
Approachable
Gentle grade
Protected from
weather
Smooth ride
No step entry
Motion light



Y l w x d e # r x u # d w # z z IX G O O 1 f r p







Multiple Door Peep Holes Level Threshold



Front Entry & Landscape Bed



Back side of the home



6' Overhang & Drainage Away from the Home





Kitchen

Ease of use for all

Safety

Independence



Perimeter countertop



Foot rest must clear toe kick

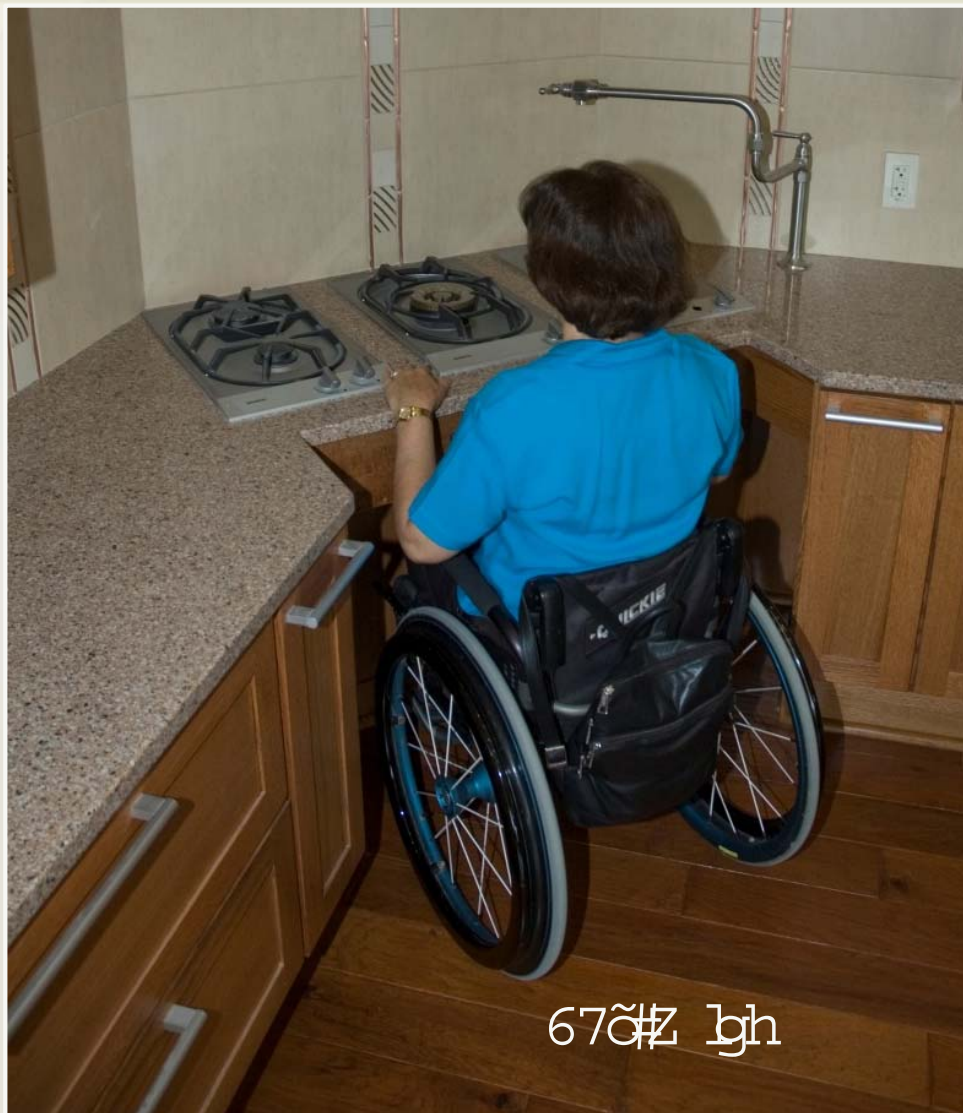


Microwave and Oven



Side Hinged Oven Doors

Knee Space Under Cooktop

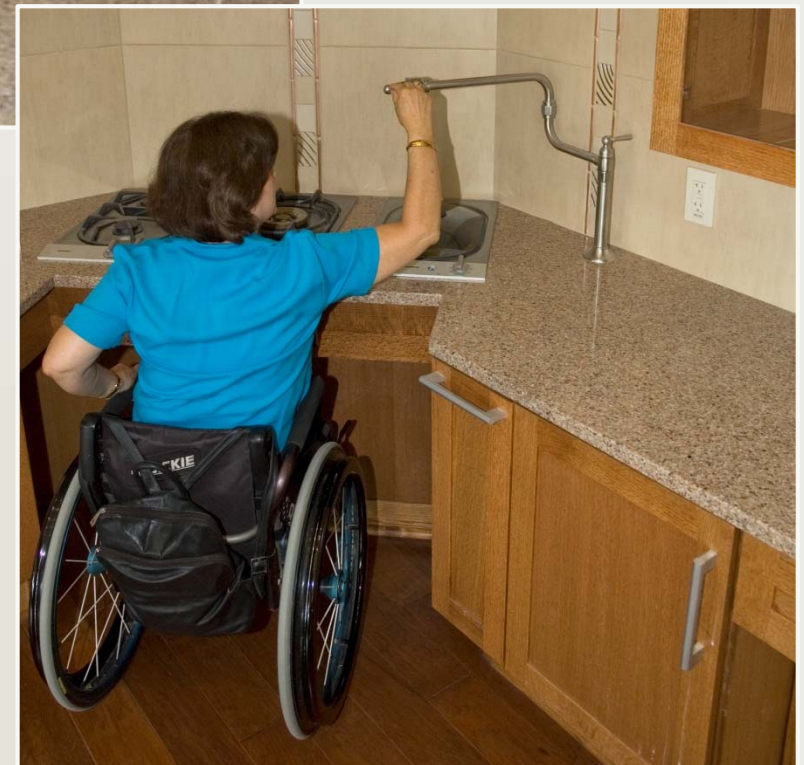


670# bh



In counter steamer/pasta cooker
with drain

Pot filler



Deep Drawers



Pull Out Pantry & Cabinet Hardware



- Don't just focus on the shape
Ex. "C", "D", lever
- Focus on the:
 - Size
 - Orientation
 - Placement
 - Finish
 - Embellishments

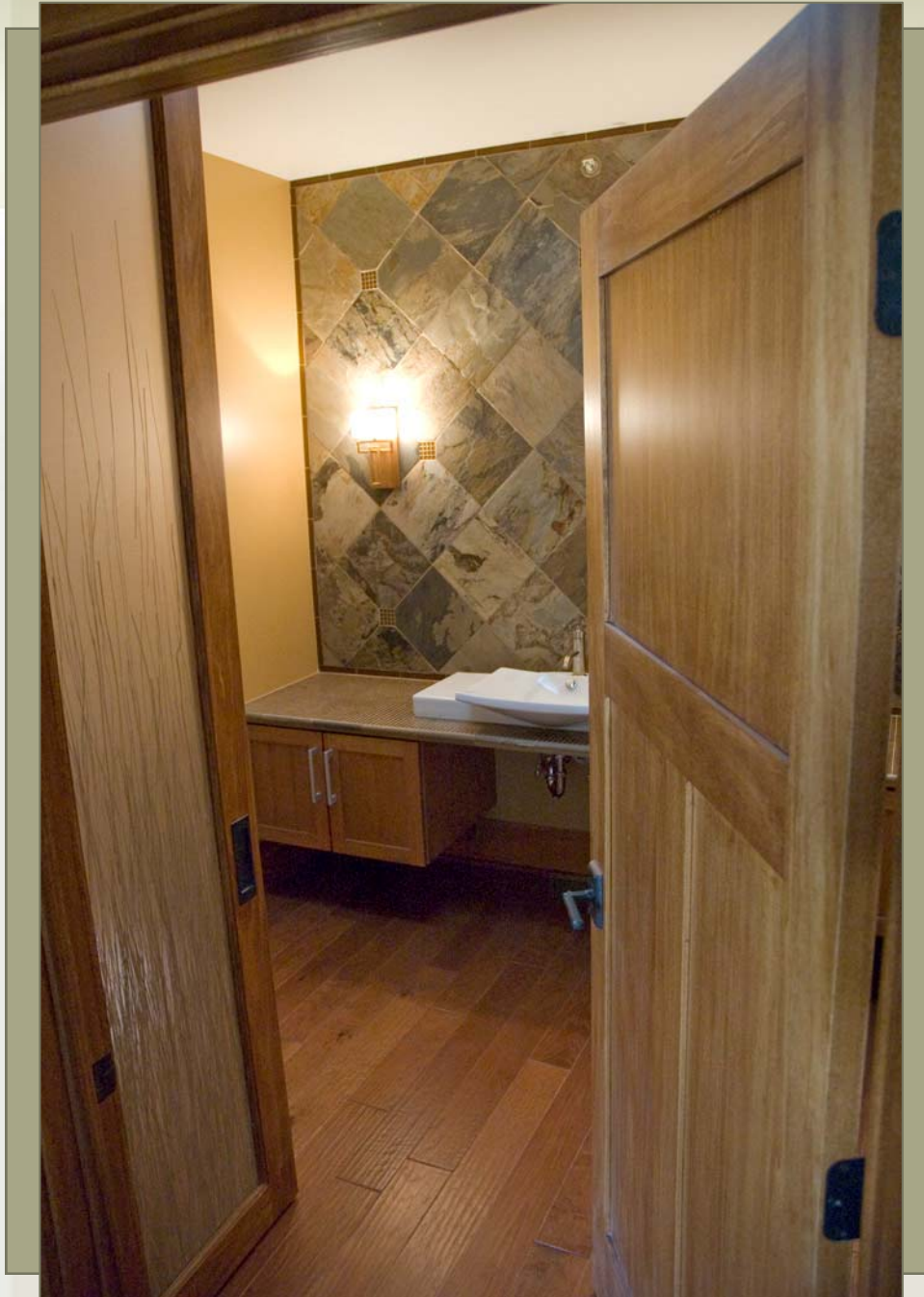




Knee Space
Under Sink

Raised Dishwasher





Bathroom

Daylight

Motion sensor LED
lights

Low maintenance

Independence

Safety

Comfort

Spa experience





Curbless Shower



- $\frac{3}{4}$ " Plywood grab bar reinforcement
- 2" X 8" for shower seat reinforcement
- Soap niche recessed in wall

Universal Design Shower Features



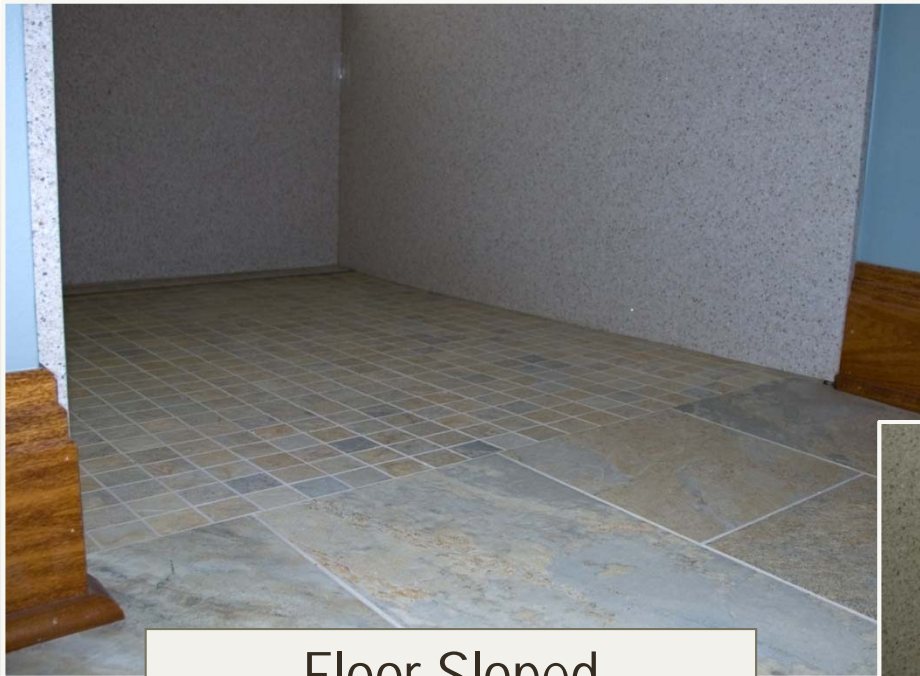
- Grab bar
- Adjustable height nozzle
- Lever handle faucet
- Pre-set temperature control
- Shelves for soap & shampoo
- Ergonomic shower chair



Channel Drain



Universal Design Shower Features for Safety



Floor Sloped

- Floor sloped to remove water
- Drain on rear wall
- Non-slip ceramic tile floor



Channel Drain



Balance Bar







- Comfort height - 17 to 19" from the floor
- Install center of toilet ring 18" from side wall
- Dual flush
- Low water use - 1.1 to 1.28 gallons per flush



Universal Design Bathtub Features

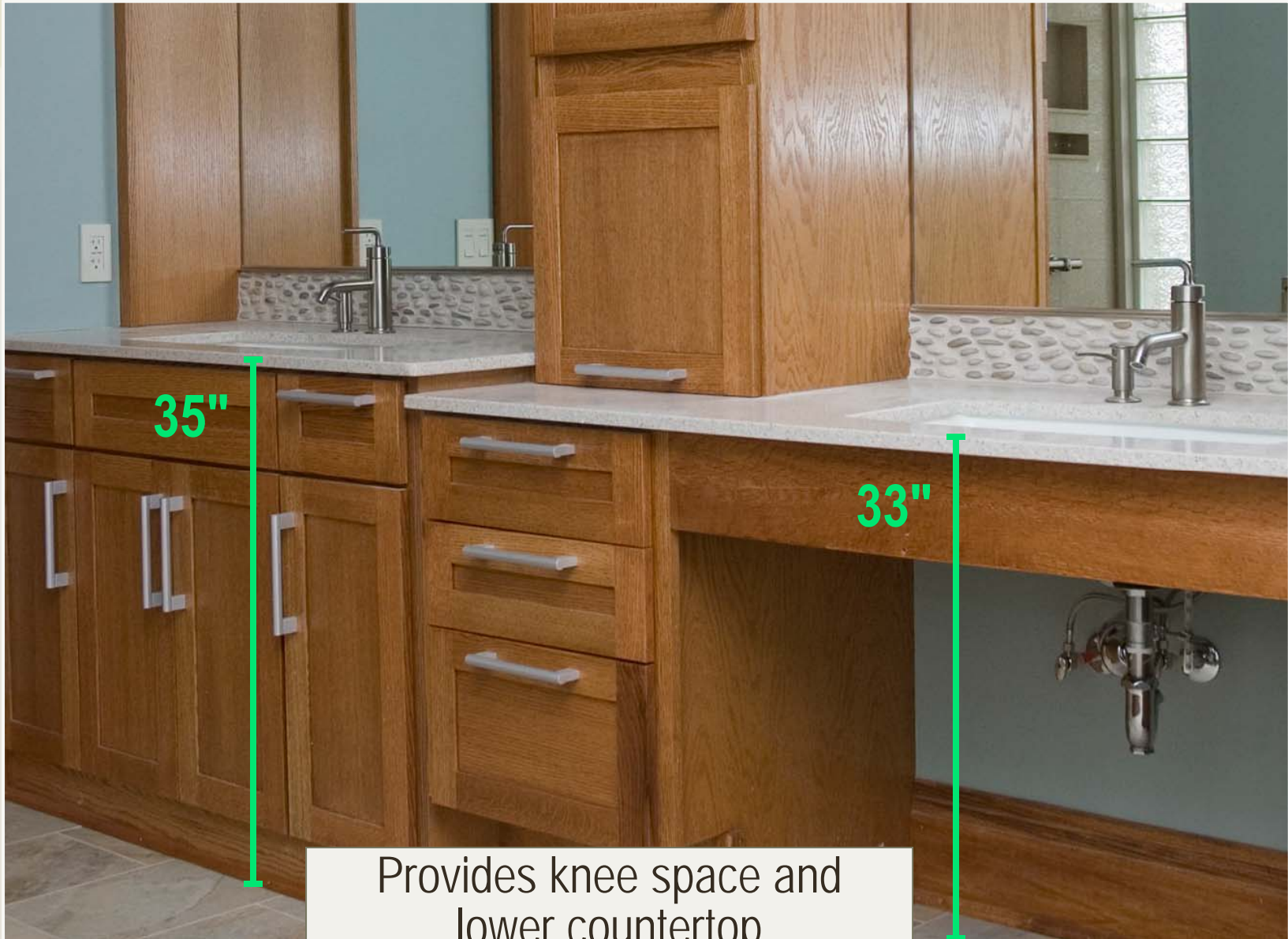


Large enough for occupants





Master Bathroom



Wardrobe/ Laundry Room



Motion sensor LED lights

Daylight

Clothing storage

Wash & dry

Iron

Pack & unpack

Humidity control

Independence

Wardrobe Universal Design Features



Two heights of closet rods
33 ½" countertop – center island

50% accessible shelves and hanging storage

Wardrobe Universal Design Features



Front loading washer/dryer
on pedestals

Full length mirror

Low hanging rod

Roll under sink

Universal Design Ironing Board







Universal Design Living Laboratory

Virtual Tour: www.UDLL.com

Rosemarie Rossetti, Ph.D.

Rosemarie@UDLL.com

Phone: 614-471-6100

Q.

What questions or comments do you have?







This entire presentation is the property of
Rosemarie Rossetti, Ph.D.

Copyright 2015